



PORTERS ESTATE AGENTS

RESIDENTIAL SALES, LETTINGS & MANAGEMENT

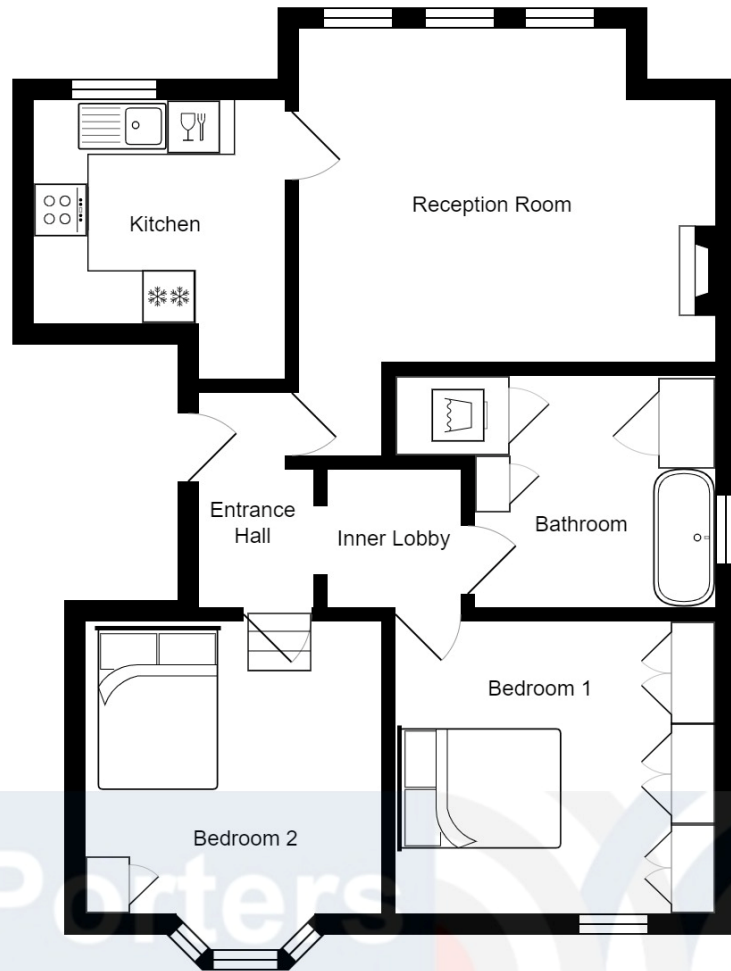
ANDREW CROFT & CO
SOLICITORS & NOTARY PUBLIC



240 Balham High Road
London SW17 7AW
Tel: 020 8772 1004
www.porters.property
info@porters.property
DX: 41604 Balham



Streathbourne Road Heaver Estate Balham SW17 8RA



Streathbourne Road, London, SW17 8RA

FOR ILLUSTRATIVE PURPOSES ONLY. NOT TO SCALE

Whilst every attempt has been made to ensure the accuracy of the floor plan shown, no responsibility is taken for any error, omission, miss-statement or use of data shown.

A spacious and well-presented 2-bedroom first floor Victorian conversion flat offered to let on the sought-after Heaver Estate within easy walking distance of both Balham and Tooting Bec tubes, the Common is at the end of the road! These stunning flats have high ceilings and lots of character with fireplaces, wooden floors and sash cord windows. The kitchen is very well fitted with built in appliances and the spacious bathroom has a utility cupboard. Both bedrooms are double with built in wardrobes. Early internal viewing is highly advised via Porters Estate Agents.

- Heaver Estate location
- Two double Bedrooms
- Spacious Reception Room with wooden floors
- Large Bathroom with utility cupboard
- Separate Well Fitted Kitchen
- Available beginning of May
- Walking distance to Tooting Common
- Period house with high ceilings and features
- Council Tax Band C - £880.06